

## Switchgear RZS-05/PSS/3S for rated voltage 500V



The switchgear (with the soft starter) type RZS-05/PSS/3S is an electrical device designed for use in underground mining in working pits in non-explosive hazard conditions and on the ground in non-explosive hazard conditions.

The switchgear (with soft starter) type RZS-05/PSS/3S is designed to connect and switching on receivers in 3-phase mine grid with insulated star point of the transformer (IT system) for the rated grid voltage 500V. The soft starter built-in the switchgear provides for soft-start of any mining machine (a pump, fan, belt, etc.), and after started-up it is bridged through the bypass contactor.

The switchgear type RZS-05/PSS/3S can also work without the participation of the soft starter, then a motor is started directly.

### TECHNICAL DATA:

ingress protection	IP54
supply voltage	500VAC, 50Hz
number of 500V outlets	1
number of soft starters	1
rated power	from 90kW to 200kW
weight	from 180 to 190kg depending on version
dimensions of switchgears from 90kW to 160kW	2000 x 1200 x 400mm (H x W x D)

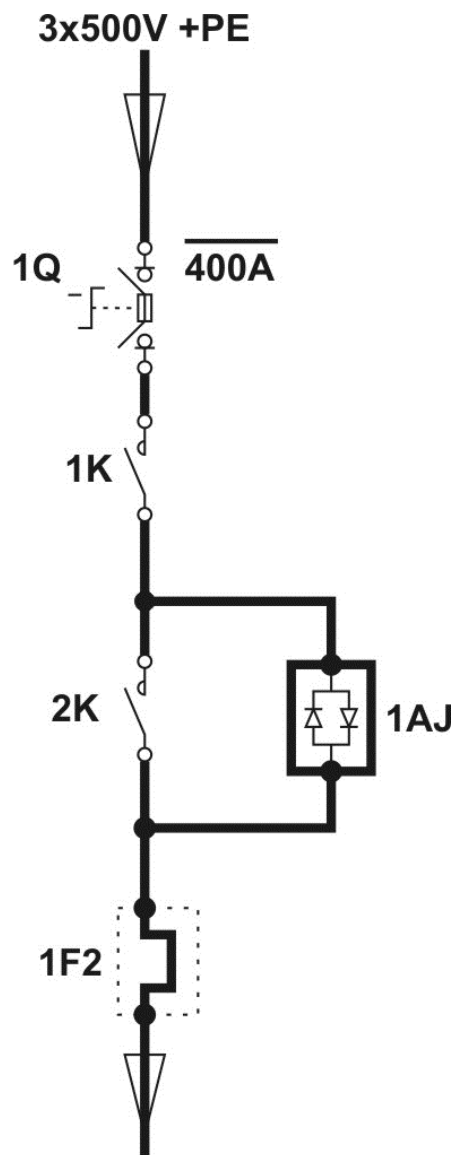
## CONSTRUCTION

The switchgear RZS-05/PSS/3S is made in form of a standing housing made from steel sheets. The construction of the switchgear housing allows it to be placed on the ground of the mining pit.

## MODE OF OPERATION

The switchgear can work in two control modes: LOCAL, REMOTE. RZS-05/PSS/3S can operate with the soft starter or without it. The LOCAL control is used to control the switchgear on its face. In REMOTE mode control of the outlet is carried out with buttons situated on the control panel or the control box (placed outside the switchgear). In case of decay and return of the supply voltage, the outlet is automatically switched after the pre-start acoustic signal. In cases of emergency or immediate need to switch the switchgear power off, it is necessary to press emergency shutdown button (situated on the face of the switchgear) or buttons situated outside the switchgear.

## SCHEMATIC DIAGRAM



Order should be submitted in writing or by fax to the address: